

# Southland Maple Beech Koru Wall Lining



Southland Maple Beech Koru Wall lining is a contemporary, stylish wall lining profile for residential and commercial lining applications. The Koru profile has a distinctive negative detail and is intended for installation in a vertical application however it can also be used in horizontal applications.

The Koru Wall lining is available in a range of widths and thicknesses which enables a variety of installation patterns to satisfy numerous designs. Koru Wall lining can be installed as fixed width, random width and random width random depth.

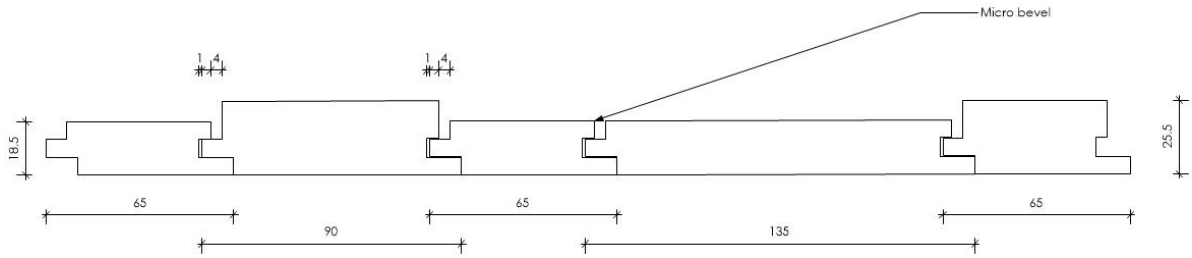
The beauty of Southland Maple Beech Koru Wall lining is intertwined with the history of Southern New Zealand, it is the only New Zealand native hardwood that is available with internationally recognised FSC certification, and it is manufactured locally. It is destined to become the wall lining of choice for discerning architects, specifiers and interior designers.

Species	FSC Certified Southland Maple Beech
Quality	Generally Dressing A (clean) Grade, Select (rustic) Grade available or graded to project requirements
Finish	Koru profile including negative detail
Standard Sizes (mm)	90x12, 65x19, 90x19, 135x19, 65x25, 90x25 or customised to suit project requirements
Application	Interior
Fire	Group 3 or Group 1S using intumescent coating system
Certification	FSC Certified. Declare Certified Red List Free
Recommended Coating	OSMO Poly-X Rapid Oil Clear Matt, OSMO Poly-X Raw Oil Transparent, OSMO Wood Wax Finish Light Steamed Beech

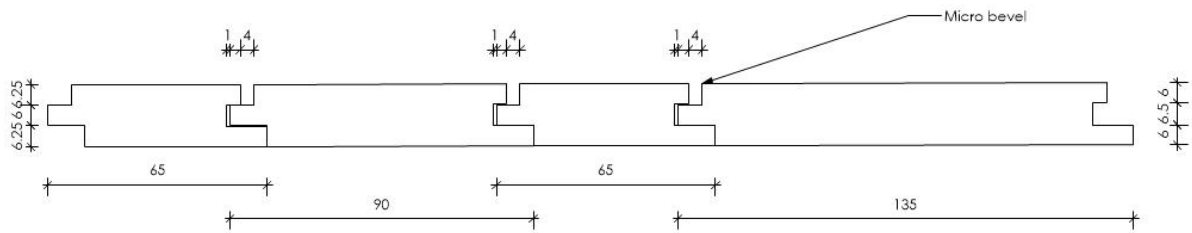
# Profiles



Example of Random Width Random Depth Koru Profile:



Example of Random Width Koru Profile:



Example of Fixed Width Koru Profile:

